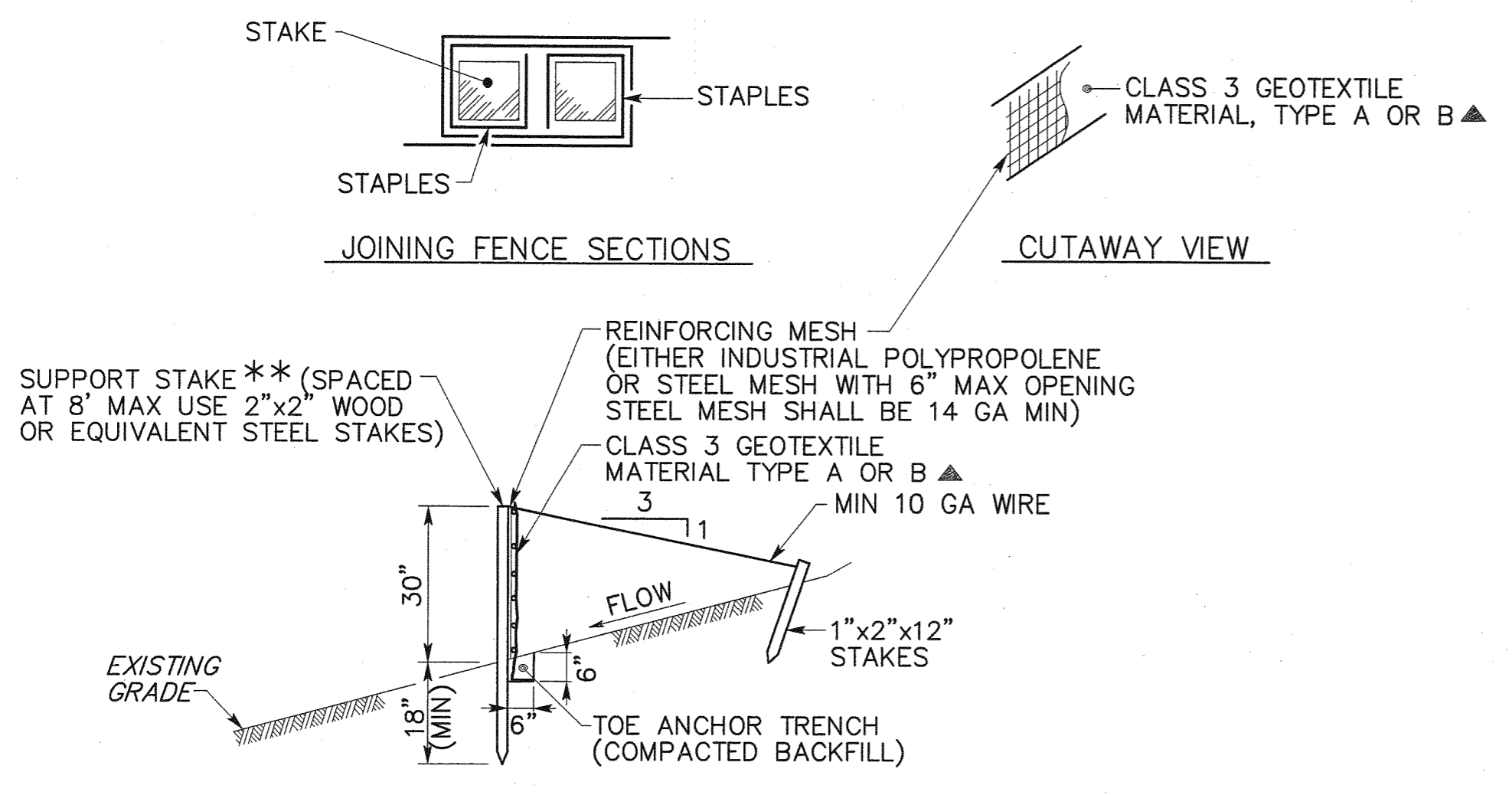
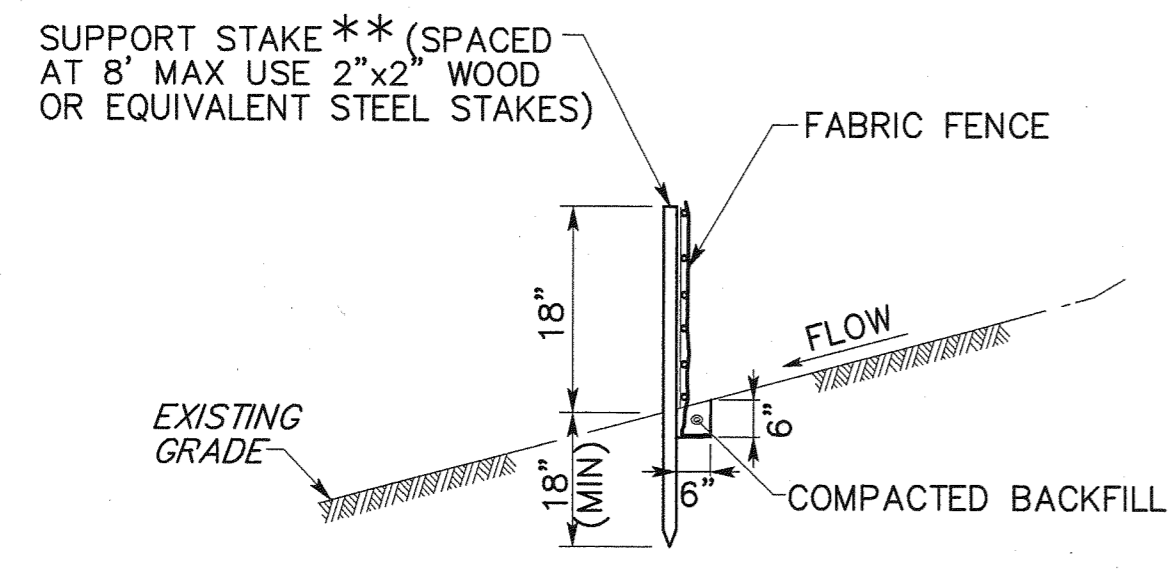


DISTRICT	COUNTY	ROUTE	SECTION	SHEET
8 - 0	CUMBERLAND AND YORK	2011	005	4 OF 15
MONROE TOWNSHIP AND CARROLL TOWNSHIP				
REVISION NUMBER	REVISIONS			DATE BY



(ITEM 0865-0003)
SILT BARRIER FENCE, 30" HEIGHT
 NOT TO SCALE

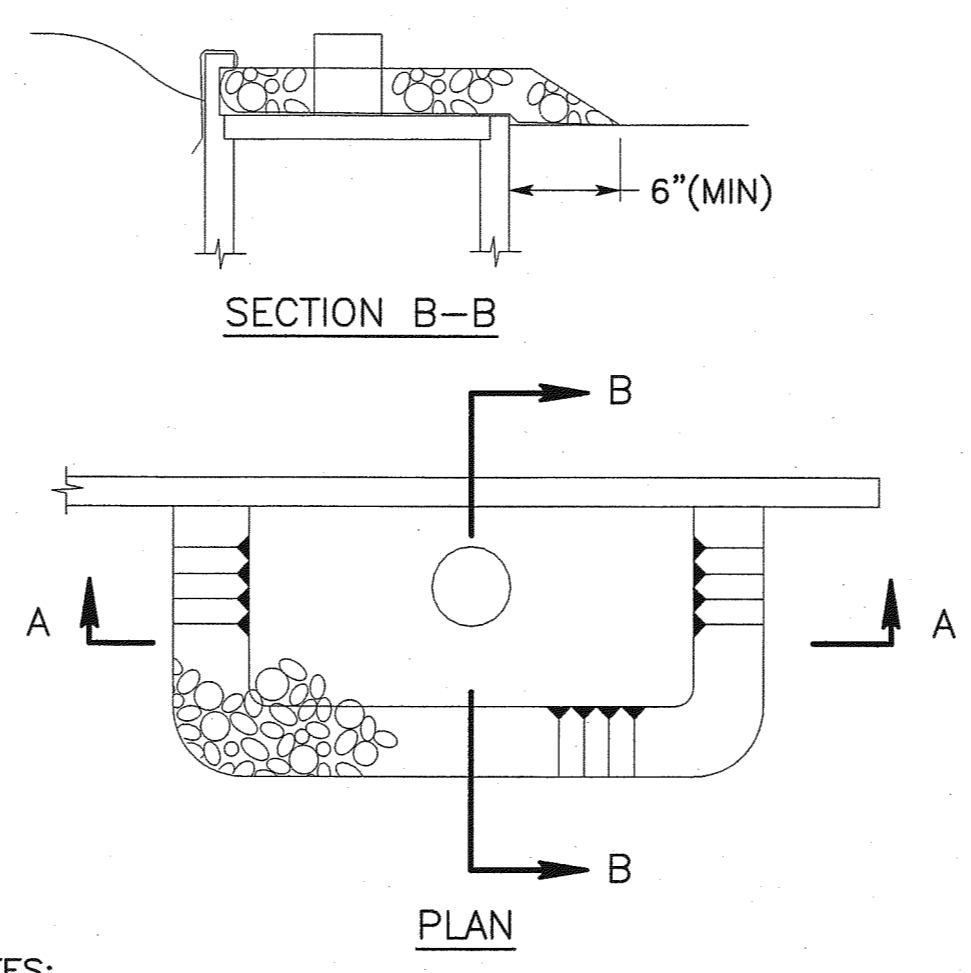
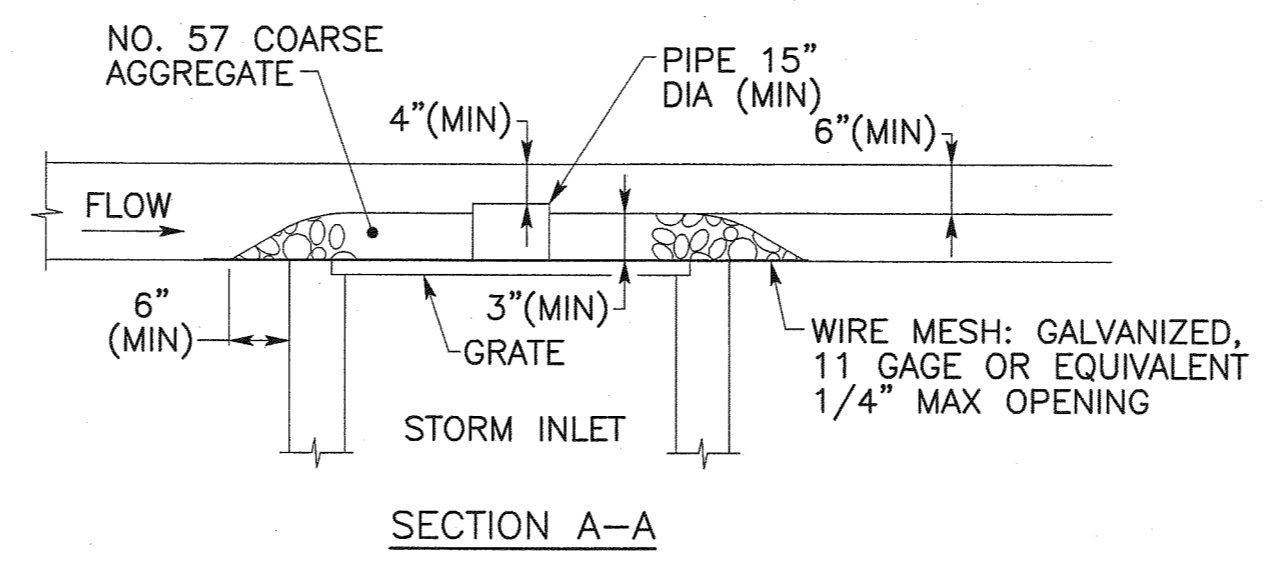
- STANDARD AND REINFORCED SILT FENCE NOTES**
- SILT BARRIER FENCE MUST BE INSTALLED AT EXISTING LEVEL GRADE, BOTH ENDS OF EACH FENCE SECTION MUST BE EXTENDED AT LEAST 8 FEET UPSLOPE AT 45 DEGREES TO THE MAIN FENCE ALIGNMENT.
 - INSPECT SILT FENCE WEEKLY AND AFTER EACH RUNOFF EVENT.
 - SEDIMENT MUST BE REMOVED WHERE ACCUMULATIONS REACH 1/2 THE ABOVE GROUND HEIGHT OF THE FENCE.
 - ANY FENCE SECTION WHICH HAS BEEN UNDERMINED OR TOPPED MUST BE IMMEDIATELY REPLACED WITH A ROCK FILTER OUTLET. (SEE ROCK FILTER OUTLET DETAIL)



(ITEM 0865-0001)
SILT BARRIER FENCE, 18" HEIGHT
 NOT TO SCALE

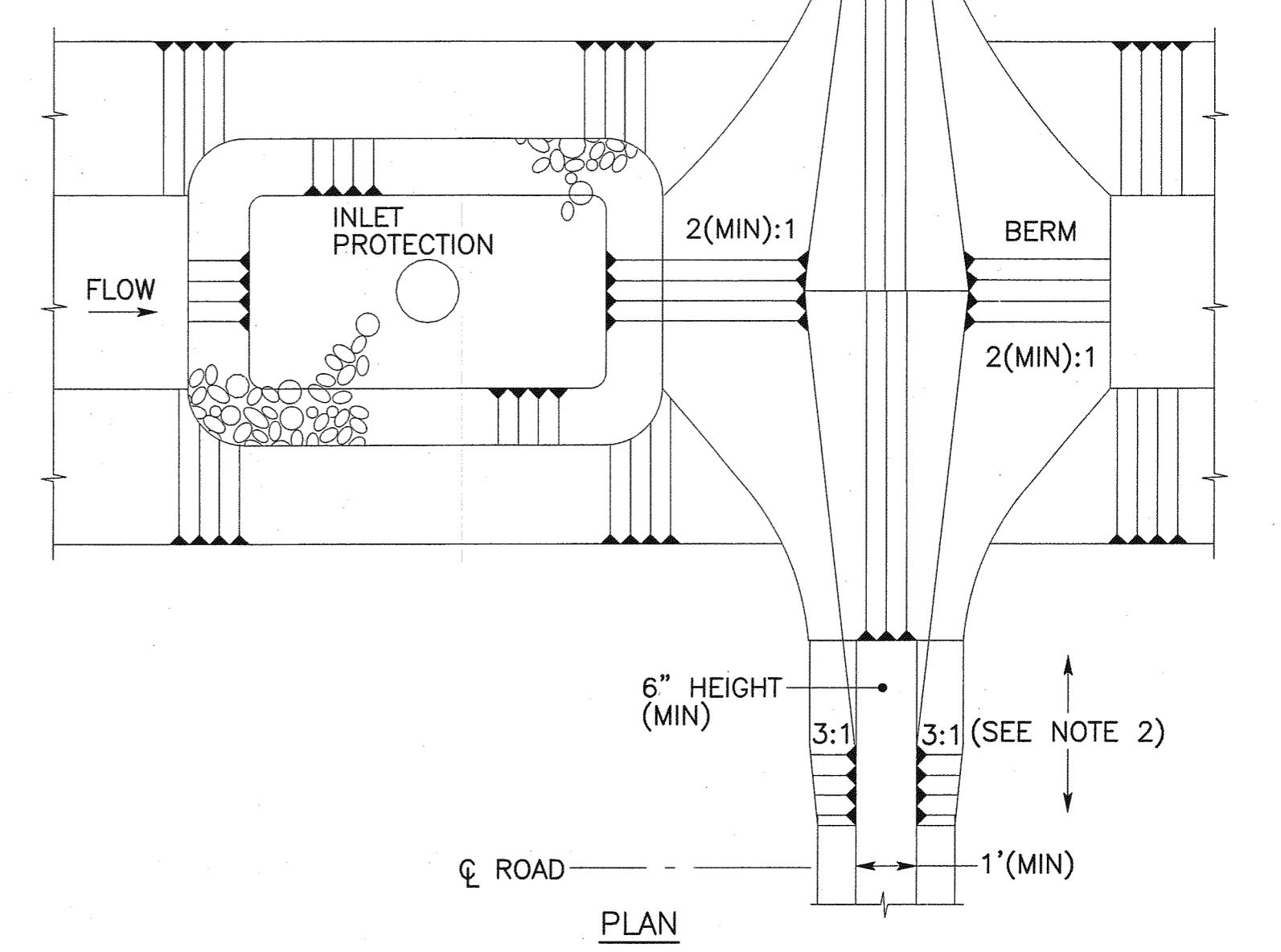
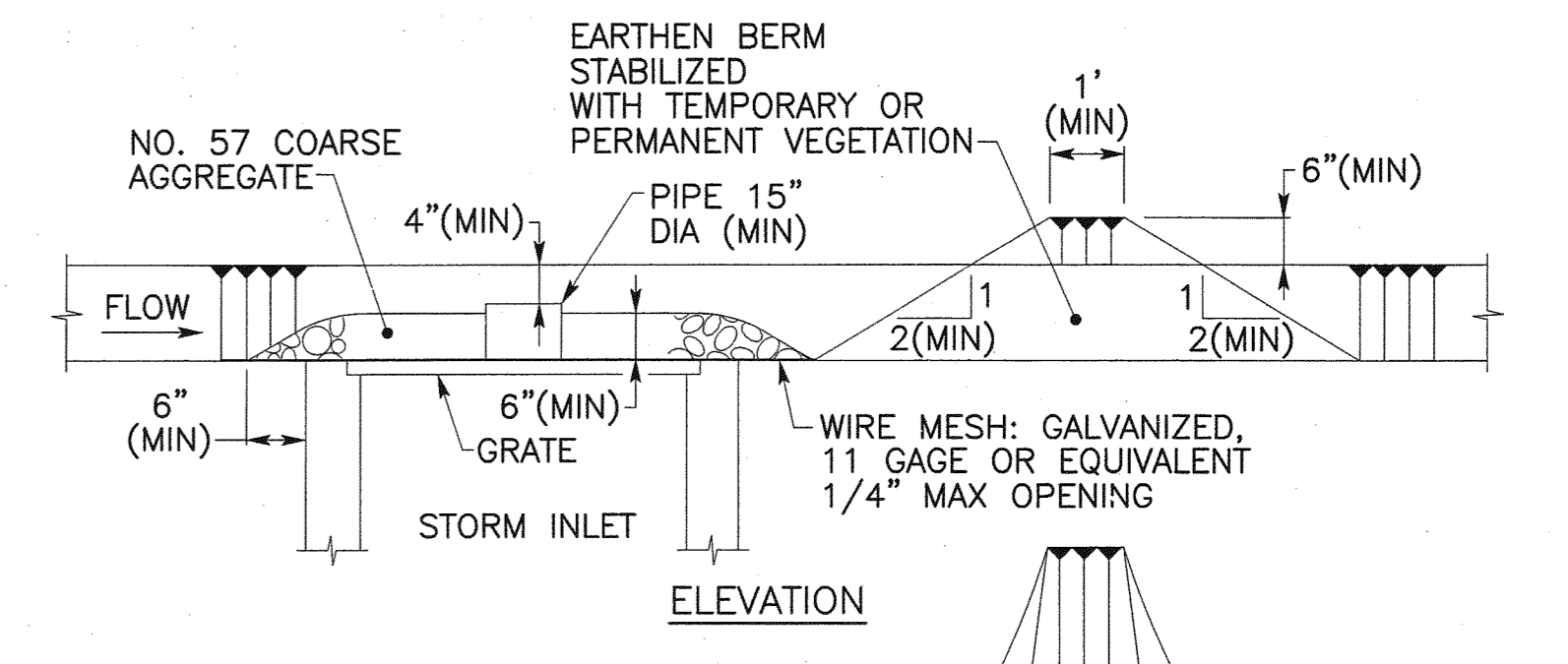
▲ TABLE A

SILT BARRIER FENCE GEOTEXTILE SELECTION SCHEDULE			
TYPE OF CLASS 3 GEOTEXTILE MATERIAL	NOMINAL FABRIC HEIGHT	MAX POST SPACING WITHOUT MESH SUPPORT	MAX POST SPACING WITH MESH SUPPORT
3A	18"	8'-0"	NA
3A	30"	NA	8'-0"
3B	18"	4'-0"	NA
3B	30"	NA	4'-0"



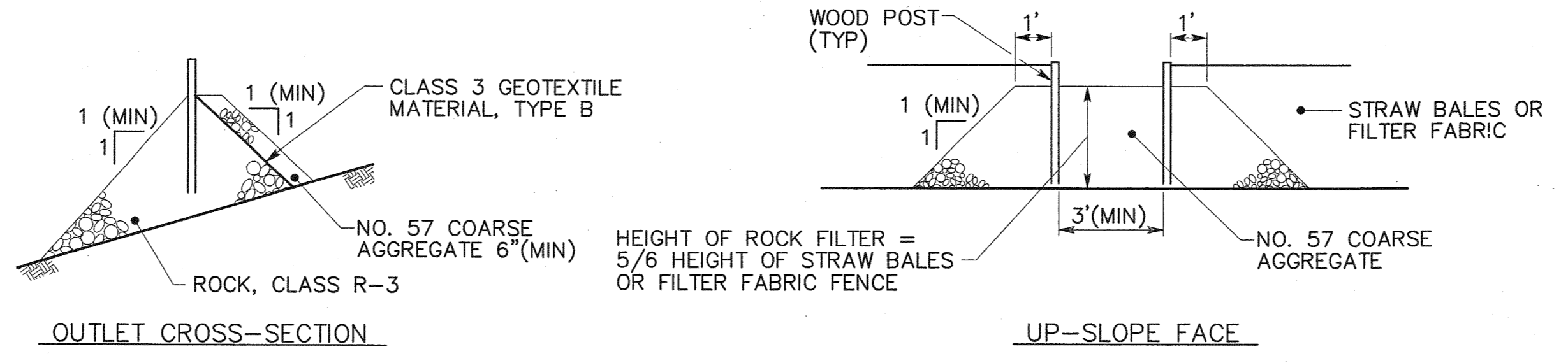
- NOTES:**
- WIRE MESH FABRIC WITH SQUARE OPENINGS NO LARGER THAN 1/4". THE LENGTH AND WIDTH OF THE MESH IS TO BE 18" GREATER THAN THE OUTSIDE DIMENSIONS OF THE INLET TO BE PROTECTED.
 - INSPECT INLET PROTECTION AFTER EACH RUNOFF EVENT AND RESTORE PROTECTION.
 - TEMPORARY INLET PROTECTION MAY BE REMOVED AFTER ROADWAY SURFACE RECEIVES FINAL COAT.

(ITEM 9000-0002)
INLET PROTECTION AT CURBED ROADWAY
 NTS



- INLET PROTECTION NOTES**
- WIRE MESH FABRIC WITH SQUARE OPENINGS NO LARGER THAN 1/4". THE LENGTH AND WIDTH OF THE MESH IS TO BE 18 INCHES GREATER THAN THE OUTSIDE DIMENSIONS OF THE INLET TO BE PROTECTED.
 - EARTHEN BERM TO BE MAINTAINED UNTIL ROADWAY IS STONED. ROAD SUBBASE BERM TO BE MAINTAINED UNTIL ROADWAY IS PAVED.
 - INSPECT INLET PROTECTION AFTER EACH RUNOFF EVENT AND RESTORE PROTECTION.
 - TEMPORARY INLET PROTECTION MAY BE REMOVED AFTER PERMANENT STABILIZATION HAS BEEN COMPLETED.
 - SIX INCH MINIMUM HEIGHT ASPHALT BERM TO BE MAINTAINED UNTIL ROADWAY SURFACE RECEIVES FINAL COAT.

(ITEM 9000 - 0001)
CHANNEL OR ROADSIDE SWALE
STORM INLET PROTECTION AND BERM(S)
 NOT TO SCALE



ROCK FILTER OUTLET
 NOT TO SCALE

- ROCK FILTER OUTLET NOTES**
- INSPECT ROCK FILTER OUTLET WEEKLY AND AFTER EACH RUNOFF EVENT.
 - SEDIMENT MUST BE REMOVED WHEN ACCUMULATIONS REACH 1/3 THE ABOVE GROUND HEIGHT OF THE OUTLET.
 - INCIDENTAL TO ITEM 0865-0001 AND ITEM 0865-0003.

